

# Participants needed for the evaluation of the YOUNG ONSET PARKINSON'S EXCHANGE APP



Easy To Use,  
Anywhere, Anytime



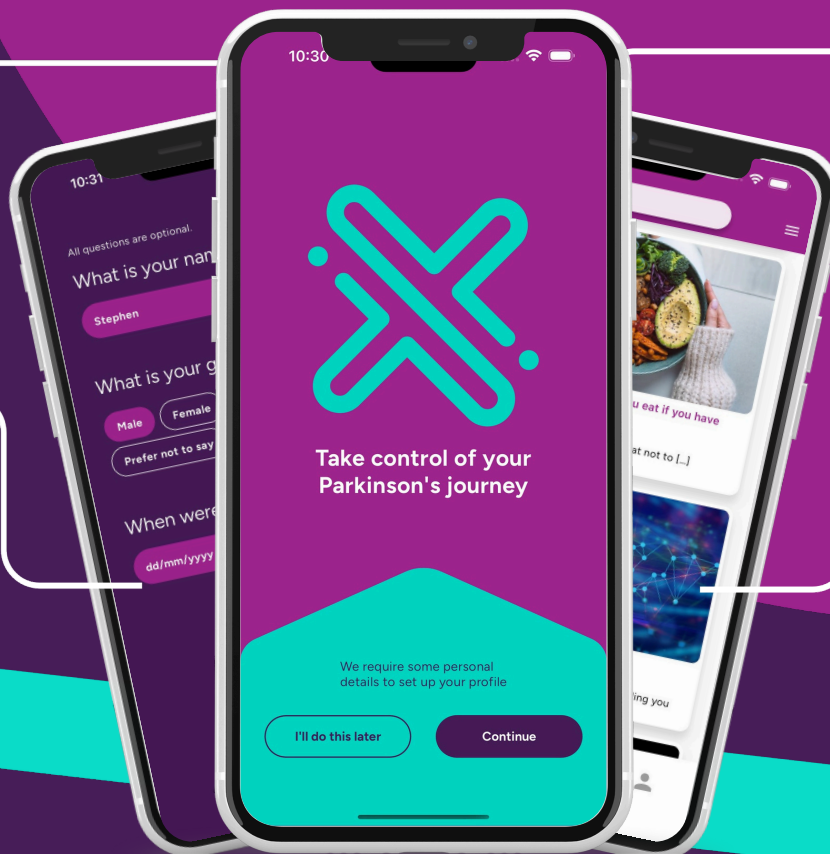
Streamlined  
NDIS Information



Personalised  
Experience



Information  
tailored to  
YOPD



We are seeking expressions of interest from people living with young onset Parkinson's to participate in a national evaluation of the Young Onset Parkinson's Exchange (YOPX) app. To be eligible for the study evaluation, you must:

- Be aged between 20 and 59 years
- Be diagnosed with Parkinson's Disease by a neurologist
- Own a smart mobile device with capacity to download the YOPX app via Google Play Store or Apple App Store
- Not be participating in other research studies
- Not have used version 2 of the YOP-X app
- Comprehend English at the level sufficient to complete the study requirement
- Be able to provide informed consent

To express your interest in the study, please contact Dr Joyce Ramos on 0435942505, or email: [joyce.ramos@flinders.edu.au](mailto:joyce.ramos@flinders.edu.au)